

Introducing **TANABE**
-Innovative Recycling Professionals-



1-2, West 23 and North 4,
Obihiro city, Hokkaido, Japan

Tanabe Co., Ltd.



<http://www.tanabe-recycle.com/index-en.html>



Corporate Overview

Company Name	Tanabe Co., Ltd.		
President	Hiroshi Tanabe		
Head office	1-2, West 23 and North 4, Obihiro City, Hokkaido		
Main factory	1-5, West 23 and North 5, Obihiro City, Hokkaido		
Parts factory	1-5, West 23 and North 5, Obihiro City, Hokkaido		
Capital	3,000,000 Japanese Yen		
Number of Employee	26		
Phone	Main factory	0155-67-1123	
	Parts factory	0155-37-2208	
Fax	Main factory	0155-67-1124	
	Parts factory	0155-37-2240	

Business lineup	<ul style="list-style-type: none"> - Collection and transportation of industrial waste, specially controlled industrial waste and general waste. - Construction, operation and management of intermediate/final disposal stations. - Collection, disassembly, selection and processing of materials such as metal, non-ferrous metal, precious metal, glass, plastic and paper. - Sales and consignment sales of secondhand goods. - Demolition work for houses and buildings. - Resale of secondhand automobiles. - Sale of recycled automotive parts. - Parts exportation. - Vehicle tow-away service. - General motor truck transportation - Export/import, intermediacy and agency of machinery and related parts for automobiles, motorcycles, trains, ships, agricultural machines, construction machines and precision machines. - Measurement certification service. - Any services and operations related to the abovementioned.
-----------------	--

Corporate History

Dec. 1964	Founded by Koichi Tanabe at West 1 and South 24, Obihiro City by acquiring a license for used goods and automobile trading (Kushiro Public Safety Commissioner).
Mar. 1967	Moved its factory to 1, West 23 and North 5, Obihiro City due to addition of automotive disassembly service.
Mar. 1967	Acquired a license for trading metal scrap (Kushiro Public Safety Commissioner).
Dec. 1974	Moved its head office to 2-1, West 4 and South 1, Obihiro City.
1995	Transferred its management roles and responsibilities from Koichi Tanabe to Hiroshi Tanabe.
June 1996	Acquired a business license for collecting and transporting industrial waste.
Aug. 1997	Changed organization to Tanabe Co., Ltd. Appointed Hiroshi Tanabe as president.
Mar. 2003	Acquired a business license for collecting and transporting general waste in Obihiro City.
May. 2003	Acquired a business license for collecting and transporting specially controlled industrial waste.
Jul. 2004	Acquired a business license for automotive disassembly (to comply with enforcement of Japan's automobile recycling law).
Mar. 2005	Started an automotive parts recycling business.
Mar. 2005	Became a member of "System Auto Parts," nationwide trading network of auto parts.
Mar. 2005	Became a member of JU Obihiro Automobile Auction (JAPAN USED CAR DEALERS ASSOCIATION, Obihiro District).
May. 2006	Registered as a waste recycling operator.
Jul. 2007	Acquired a license as a Class 2 Fluorocarbons Recovery Operator.
Oct. 2007	Acquired a license for measurement certificates.
Apr. 2008	Acquired a license as a Class 1 Fluorocarbons Recovery Operator.
May. 2008	Completed a new factory at 1-2, West 23 and North 4, Obihiro City as the main facility, and changed existing facility into a parts factory.
Jan. 2009	Registered as a demolition work operator.
Aug. 2009	Became a member of USS Sapporo Automobile Auction (run by USS Co., Ltd.)
Oct. 2010	Started sale on Yahoo! Net.
Oct. 2010	Acquired a business license for an Automobile Shredder Operator.
May. 2011	Started exportation business, mainly to Southeast Asian countries and regions.
June 2011	Completed a new administrative building inside main factory site (non-ferrous metal and recycling product division)



List of Licenses

- Trading license for used articles, metal scrap and automobiles	Obihiro No. 190 (used articles)
- Collection and transportation of industrial waste	License No. 00110054479
- Collection and transportation of general waste	License No. 219 from Obihiro Waste Management Office)
- Collection and transportation of specially controlled industrial waste	License No. 00160054479
- Processing of industrial waste	License No. 00120054479
- Waste recycling operation	Registration No. 91
- Class1 Fluorocarbons Recovery Operator	Registration No. 0111200029
- Class 2 Fluorocarbons Recovery Operator	Registration No. 01112000136
- Automobile collection operator	License No. 20011000136
- Automotive disassembly operator	License No. 20013000136
- Demolition work operator	Hokkaido Registration No. 20, Tokachi District No.31
- Automobile shredder operator	License No. 20014000136

Message from the President




Hiroshi Tanabe, president

Honesty is our motto!

In recent years, environmental problems have become far more serious, and actions for reducing greenhouse gases such as carbon dioxide and chlorofluorocarbons are being taken everywhere. As a company engaged in environment-related businesses, Tanabe Co., Ltd., together with all of its employees, is working tirelessly to become an accountable and satisfactory business partner for all customers and stakeholders through chlorofluorocarbon gas collection, reuse of automotive parts, recycling of metal materials, and processing of industrial waste. All of our company staff pursues various kinds of reuse methods, with sights set on realizing a recycling-based society with "Human Bonding" as our shared keyword.





**Sharing "Human Bonding"
as a keyword for our children.
We strive to contribute to solving
environmental problems,
with the goal of a recycling-based
society in mind,
through the materialization
of industrial waste and energy savings**



Be kind to people, materials and nature.

We try our best to realize recycling-based, environmental society and contribute to local communities with honesty.

Recycling of metal, non-ferrous metal and other materials



Waste metals	Snowplows	TVs	Stoves
Electrical wire	Motorcycles	Game consoles	Air conditioners
Automobiles	Scooters	SONY Play Station	Fan heaters
Waste batteries	Bicycles	Players	Air purifiers
Heavy machines (e.g., backhoes)	Fuel tanks	Mobile phones	Fans
Agricultural machinery (e.g., tractors)	Office supplies	Telephones	Dehumidifiers
Various machines	Steel desks	PDA's	Microwaves
Machine equipment and tools	Steel shelves	Electronic dictionaries	Ovens
Steel house goods	Steel lockers	Calculators	Rice cookers
Steel office supplies	Steel chairs	Fax machines	Water boilers
Waste cans (steel, aluminum)	Steel furniture	Car navigation systems	Home gas grills
Canned food cans (cleaned)	Grass cutters	Car audio	Pots
Waste newspaper	Chainsaws	GPS related devices	Frying pans
Waste magazines	Perforated spray cans	Audio	Pans
Waste cardboard	Small home appliances	CD/MD/MP3 players	BBQ stands
Paper packs	Desktop PCs	CD/DVD players	Cassette grills
Shredded paper	Notebook PCs	Tuners (digital/CATV)	Hot plates
PET bottles	PC monitors	Radio cassette players	Sewing machines
Wheels with tires	LED monitors	Radios	Knitting machines
Steel wheels	Word processors	Digital cameras	Vacuum cleaners
Automobile accessories	DVD recorders	Video cameras	Transceivers
Heaters	VCR decks	Boilers	Laundry poles

Process flow of recycling metal and non-ferrous metal

Metal recycling (cut off)

Big metal frame is cut off by cutting machines. If machine use is not appropriate, then the work is done by hand.



Raw materials



Gas cutting



Machine cutting



Products

Metal recycling (compression)

Metals selected as recycle raw material are compressed by a pressing machine into an easy-to-handle size.



Raw materials



Metal compression



Products

Non-ferrous metal recycling (aluminum)

Aluminum ingot is made by melting engines, transmission gears and wheels.

Aluminum factory



Raw materials



Aluminum melting

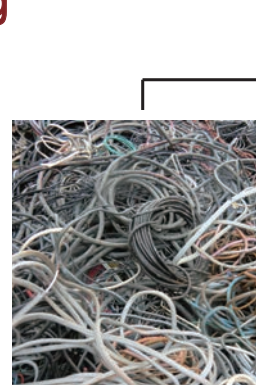


Products

Non-ferrous metal recycling (copper wire)

Coated wires are cut to appropriate length and separated into coating materials and raw wire.

Non-ferrous metal handling building



Raw materials



Coated wire cutting



Coat removal



Products



Products

Waste metal recycling

Waste metals are easiest to recycle among various waste as they are strong against decay, deterioration and quality change.

Waste metal is economically easier to obtain compared to digging iron ore from mines.

Metal waste is handled by various processing methods and classified by metal type.



World-class state-of-the-art technologies can reproduce valuable assets

We will reuse limited resources effectively
and contribute to building an Earth-friendly environment

Automobile recycling



Sale of automobile, heavy machine, and agriculture machine parts

We operate all around the Hokkaido area, with operations based in our hometown of Obihiro City. Our sales coverage is nationwide.

Valuable automobiles purchased from our community are disassembled and sold as good quality used parts.

We always line up abundant stocks of parts to fulfill needs for various automobile types. Parts are also sold through Yahoo! Auction and Internet sales.

Process flow of recycling automotive parts

Acceptance

Responding to customers' requests, we visit them to pick up used vehicles. Accepted vehicles are all managed by computer using a body serial number. Vehicles are kept in storage until moved to the operational process.



Production and disassembly

After thoroughly checking functionality and condition, usable parts are removed from the vehicle body. Exterior parts, engine parts, and electrical parts are reproduced so that they will meet customers' needs.

Engine, radiator, wheel-related parts and harnesses are removed from a disassembling vehicle.



Stocking

Disassembled parts are carefully cleaned one by one. Only recycled parts that passed all inspection items can be stored in the stockyard.

Stocking place and method are meticulously organized so that they will be smoothly delivered in response to customer orders.



Order and delivery

We manage about 2 million stock parts using an online system so that we can promptly respond to customers' orders and find the best products.

Based on online orders, products are delivered all over the country with strict packaging so that delivery accidents never occur.





Environmental protection is the most important issue on the planet.

It is our duty to organize and create
a recycling-based, environmental society.
In order to realize this, we work constantly
to improve the environment in nature-friendly ways.

Processing of industrial waste



Item	Intermediate processing (by TANABE)	Intermediate and final disposal (by other companies)	Recycling
Metal scrap	Shredding	–	Raw material for ferrous material
Wood scrap	–	Shredding	Bark chips, compost, fuel
Waste plastic	Shredding	Landfill	Fuel
Ceramic scrap	–	Landfill	–
Glass scrap	–	Landfill	–
Concrete scrap	–	Landfill	Recycled aggregate
Rubble	–	Landfill	Recycled aggregate
Polluted mud	–	Fermentation/incineration	Compost
Animal and plant residues	–	Fermentation/incineration	Compost
Textile scrap	–	Incineration/landfill	–
Waste acid	–	Incineration/landfill	–
Waste alkali	–	Neutralization/incineration	–
Waste oil	–	Recycling/incineration	Fuel
Burnt residue	–	Landfill	–
Recycle designated electric appliances	–	Disposal by designated institution	–

Collection, transportation and processing of waste

Our main operational area is Obihiro City and the surrounding Tokachi district.

We pledge that waste materials received from customers are properly processed. Recyclable materials can be effectively managed for reuse; those that cannot are processed at the final disposal site.

Owned vehicles and heavy machines



Fork grapple



Backhoe with magnet



LaBounty Shear



Truck with Hiab



Self with UNIC winch



Truck with winch



Garbage truck



Dump truck with Hiab



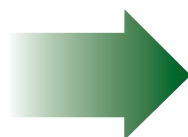
Truck with magnet

Recycling scrap tires

Scrap tires are initially roughly shredded, and then either disposed of in landfill or processed with thermal recycling after removing bead wires and shredding into chips.



Shred





Facilitation and thorough practice of recycling and proper disposal is one of today's biggest issues.

Recognizing the value of realizing a business environment in harmony with nature, TANABE is proudly processing industrial waste using appropriate and safe methods.

Dismantling buildings and structures



Warehouse



Cattle shed



Slurry tank



Silo

Our sales and operation coverage is Tokachi district, based in Obihiro City, Hokkaido. We can dismantle buildings and structures with appropriate methods at a reasonable price. It is our commitment to provide the most efficient and environmentally friendly way of recycling.





Japanese automobiles and parts are revitalized overseas

Our activities are always based on a global awareness and our contribution to future generations through the pursuit of realizing a “recycling-based, environmental society” and effective utilization of limited resources.

Exportation business



Japanese automobiles are in high demand in overseas markets. We export automobiles and spare parts, heavy machines, agricultural machines, and other Japanese equipment, mainly to Southeast Asian countries and regions.



As a corporate citizen, TANABE aspires to become a company that succeeds in passing on Hokkaido's vast land, fertile soil, fresh air, pure water, and abundant sunshine to future generations.

We see the effective disposal of things no longer needed as a virtue, and one that we desire to see continue. We always appreciate the essential value of goods and materials that, to others, may seem useless. These goods and materials can be repeatedly and sustainably applied to different type of usage. This is what we at TANABE strive constantly to make possible.

