



# Tanabe, Ltd.

CORPORATION GUIDE



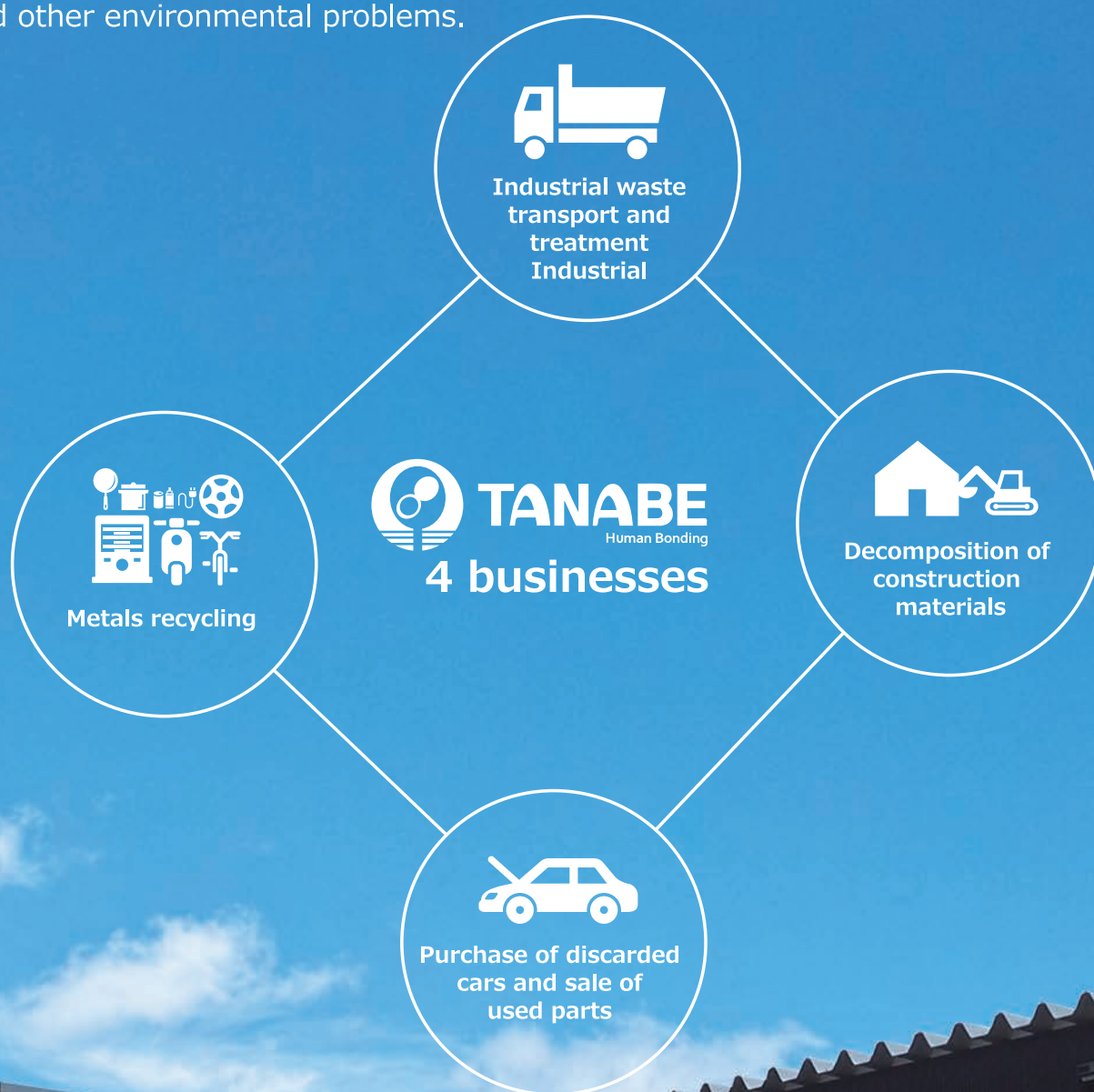
Linking resources to the future

# Promoting a cyclical society that is easy on the environment and the budget

We are a waste material recycling dealer based in Tokachi Obihiro.

We buy up as resources what is discarded as trash,

By seeking a cyclical society, we contribute to the solution of energy conservation and other environmental problems.



有限会社 タナベ

お客様専用駐車場

トラック専用 乗用車専用 事務所

## Message from the top

### Toward greater sincerity

The world has depended on exports to the developing countries, but on October 1, 2018 the amended Basel regulations took effect, incorporating strengthened rules about "miscellaneous scrap."

As an enterprise engaged in environment-related businesses, Tanabe too daily pursues waste reuse via wholesaling of steel and non-ferrous metal scrap, auto disassembly, industrial waste processing, and home disassembly, based on our "3R Principle." All of our employees seek a cyclical society, and daily promote customer satisfaction under the "linkage" watchword. Going forward as well, we request your all-around support and patronage.



Hiroshi Tanabe,  
Representative Director

## Corporate Overview

### Trade name, Representative

Tanabe, Ltd., Hiroshi Tanabe, Representative Director,

### Head office and main plant

Tel:0155-67-1123 Fax:0155-67-1124  
Address: Obihiro City Nishi 23 Joji Kita 4-1-2, Hokkaido

### Parts plant

Tel:0155-37-2208 Fax:0155-37-2240  
Address: Obihiro City Nishi 23 Joji Kita 5-1-5, Hokkaido

### Capital, employee headcount (as of October 2018)

¥3 million, 57 persons

### Business content

Industrial waste, special control industrial waste: collection and transport  
Construction, operation and management of intermediate processing and final disposition locations  
Collection, deconstruction sorting and processing of steel, nonferrous metals, valuables, glass, plastic, paper and other materials  
Used materials trading and consignment sales,, used car trading, sales of auto recycle parts, construction industry and earthworks, used car trading, car recycled parts sales, export parts sales, auto removal by tow truck, general material auto transport; import, sale, intermediation, measurement certification and agency work for autos, motorbikes, electric vehicles, ships, agricultural tools, construction machinery, precision machinery fittings and their parts; and all businesses ancillary to the above.

- Dec.1964** Founder Representative Koichi Tanabe begins business in Obihiro City Nishi 1-24 after acquiring used goods and auto approval
- Mar.1967** Plant relocated to Obihiro City, Nishi 23 Joji Kita 5-1-5 (due to additional auto disassembly business)
- Dec.1974** Head office relocated to Obihiro City, Nishi 4 Jonan 1-2
- 1995** Hiroshi Tanabe succeeds Koichi Tanabe in management
- Jun.1996** Acquires approval for collection and transport of industrial waste
- Aug.1997** Reorganized as Tanabe, Ltd. Hiroshi Tanabe takes office as representative director
- Mar.2003** Approved for Obihiro City general waste collection and transport
- May 2003** Approved for collection and transport of special management industrial waste collection and transport
- Jul.2004** Acquires auto disassembly business
- Dec.2004** Approved for industrial waste disposition
- Jul.2007** Approval as Class 2 fluorocarbon recovery dealer
- Oct.2007** Acquires measurement business
- Apr.2008** Acquires Class 1 fluorocarbon recovery business
- May 2008** New plant (as main plant) completed at Obihiro City Nishi 23 Joji Kita 4-1-2, former plant becomes parts plant
- Oct.2010** Acquires auto crushing dealer
- Dec.2015** RPF plant completed, begins operations





## It is I who moves the Company

It was in 2015, my third anniversary of joining the Company, that the decision was made to undertake the RPF business --- creating fuel from trash. I was placed in charge, which up to then was a business that Tanabe had not handled. It got off to a shaky start, since no one understood it or could teach it. The situation was one of ignorance --- left, right and center, --- but by means of study sessions and repeated contacts with dealers in the business, I formed my own ideas on how to make the RPF business happen.

**"What should operational processes be, so as not to impact on other businesses?"**

After only 3 years with the Company, not only was I listened to, but also my views were sometimes solicited by the officers.

**Gradual implementation of my ideas was an indescribable thrill.**

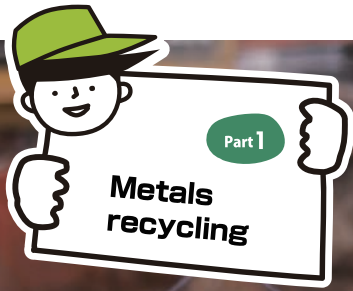
Though young, Tanabe assigned me a major business. Not one that could be quickly accomplished, but one that can boost Tanabe's future recycle rate and at some point demonstrate its capabilities.

**In Charge: Takumi Sato, Deputy Manager**

Joined Tanabe in 2012

Department: Intra-plant Industrial waste disposal





## A recycler in Tokachi! We buy your throwaways at high prices!

Tanabe buys at high prices the following items from your home!

(There may be disposal costs, depending on the item)

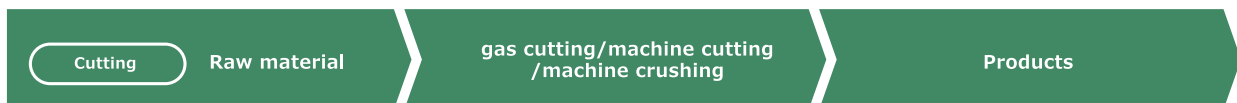
### We buy these items.



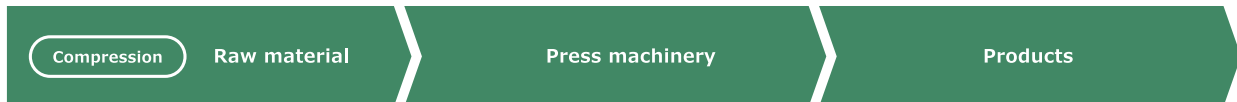
Waste copper materials, electrical wiring, cookware, metal household items, grass cutters, auto waste batteries and fuel tanks, heating equipment, car navigation and auto ancillary parts, meat grills and household gas stoves, heavy machinery (backhoes, others), agricultural machinery (tractors, others), sewing machines, machinery (various types), clothes drying poles, tires with wheels, fan heaters and stoves, motorbikes and autos, water heaters, metallic health/fitness equipment, empty cans (aluminum, steel), canned goods (washed only), steel desks, chairs, shelving and lockers, cooling equipment, others

## Recycle flow

### metal recycle



We use cutting machinery to section large steel frames, etc. When cutting machines cannot be used, we section manually with gas cutters.



Sorted metals used as recycling raw materials are highly compressed with press machines, enabling easier handling.

### Nonferrous metal recycle



Aluminum ingots are made by melting down engines, transmissions and wheels.



Coated wire is cut to suitable lengths, and the coating separated from the bare wire by machine.





## Auto parts are also important resources for our thorough reuse

Discarded auto purchases and sale of used parts are conducted in Obihiro City-based road markets in all our business areas. Sales are nationwide. To use one more time the autos purchased from our customers, we disassemble the autos and sell good quality parts. To enable compatibility with a variety of auto bodies, we strive to prepare an abundance of parts. Sales are made online as well.

## Auto recycled parts flow

### Warehouse entry

When requested by customers, we go to pick up used autos. All warehoused auto body numbers are computer managed, and are placed in stock until shifted to the various operating processes.



### Production and disassembly

#### Parts-producing auto bodies

The condition and function of reusable are carefully verified and separated out. Exterior, engine, electrical and other detailed parts are reused corresponding to customer needs.

#### Disassembled auto bodies

Engines, radiators, suspensions, harnesses and others are removed.



### Storage

Parts removed from auto bodies are washed one by one. Only those that clear inspection are recycled, and are carefully stored in our warehouses. Storage sites and methods enable speedy retrieval of ordered parts.

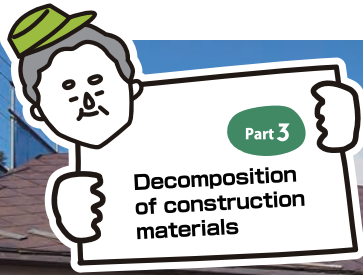


### Ordering and transport

Using our online system, we can guide customers promptly to better products among the 2 million items in our nationwide warehouses.

When orders are received from distant places as well, we package the goods securely to prevent damage in transit, and transport them nationwide.





## Buildings are not to be trash

At Tanabe we engage in the home disassembly business and treat the resultant waste material as resources. Our building disassembly is in the Obihiro City-based Tokachi Kannai area. When requested by customers, we carry out disassembly fairly priced for the content of the contracted property.



## "Transport" – an operation essential to the cyclical society

We collect and transport industrial waste in our Obihiro City-based Tokachi Kannai business area. On the customer's request we process the waste appropriately, reuse as resources what can be recycled, and make final disposal of the remainder.

Waste material that can be collected and transported



Scrap metal, scrap wood, plastic waste, magnetic scrap, glass scrap, concrete scrap, various types of debris, sludge, plant and animal remainders, textile scrap, scrap paper, acidic materials, alkaloid materials, waste oil, combustible chaff, household recycle items, other household electricals, OA equipment





## Tanabe, Ltd.

Head office, main plant

Hokkaido, Obihiro Nishi 23 Joki Kita 4-1-2  
TEL 0155-67-1123 FAX 0155-67-1124

Parts plant

Hokkaido, Obihiro Nishi 23 Joki Kita 5-1-5  
TEL 0155-37-2208 FAX 0155-37-2240

Homepage

<http://www.tanabe-recycle.com>

